

Power Cost Adjustment Explained

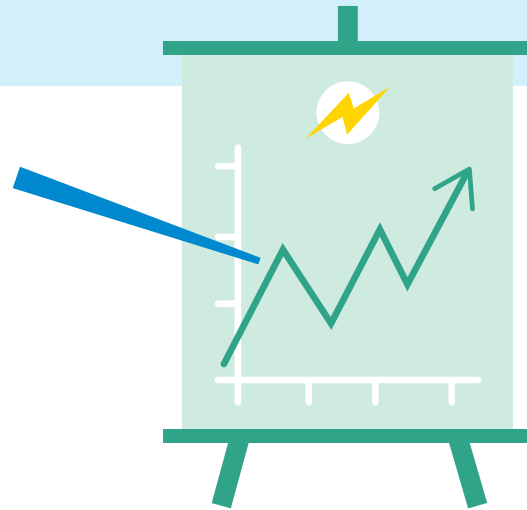


Locally owned municipal utilities are non-profit organizations.

When our utility charges customers for power, there is no profit collected. The cost of power is passed through from our wholesale power supplier (WPPI Energy) to our customers.

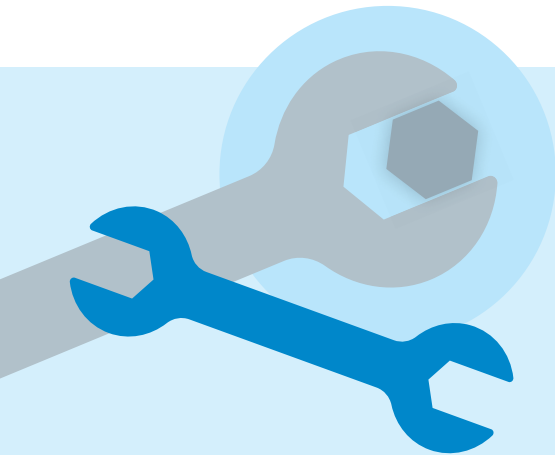
The cost to generate or buy electricity fluctuates.

This is due to changing fuel costs, weather, equipment outages, and the demand for electricity.



Adjustments are made to reflect the true cost of power each month.

Base rates are collected from customers each month, representing our projected revenue requirements. A Power Cost Adjustment Charge accommodates for monthly fluctuations in power costs.



Customers' bills show the adjustment ↑ or ↓.

This adjustment is made on the customer's bill to reflect any changes from their base charge for that month. This can be a charge some months and a credit other months.

